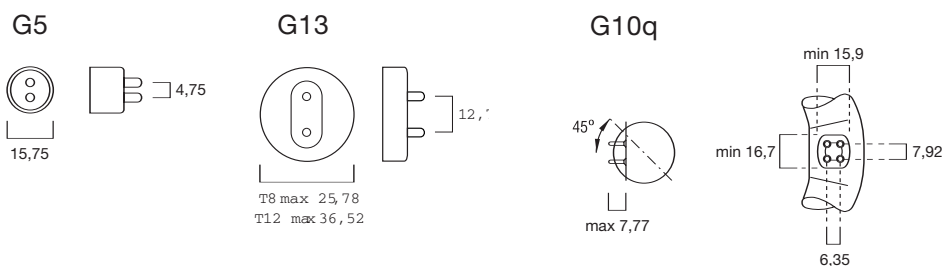


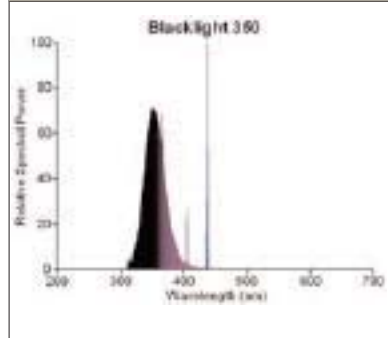
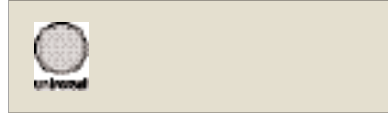
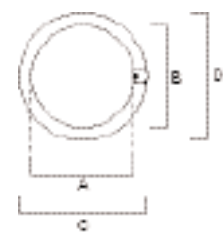
Blacklight (BL350)



	A max	B min	B max	C max	D nom
4W	135.9	140.6	143.0	150.1	16
6W	212.1	216.8	219.2	226.3	16
8W	288.3	293.0	295.4	302.5	16
11W	212.1	216.8	219.2	226.3	16
15WT5	288.3	293.0	295.4	302.5	26
15WT8	437.4	442.1	444.5	451.6	26
20W	589.8	594.5	596.9	604.0	26
40W/2ft	589.8	594.5	596.9	604.0	26
40W	1199.4	1204.1	1206.5	1213.6	26



	A min	A max	B min	B max	C or D min	C or D max	D min	D max
22W	149.1	155.6	147.6	157.2	203.2	215.9	26.2	30.9
32W	239.7	246.1	236.5	246.1	292.1	304.8	26.2	30.9
40W	341.3	347.7	338.1	347.7	393.7	406.4	26.2	30.9
60W	341.3	347.7	338.1	347.7	393.7	406.4	26.2	30.9



- A range of UVA fluorescent lamps in various lengths and diameters
- Lamps emit UV-radiation between 315nm and 400nm (at peak of 352nm)
- Same shape, structural and electrical characteristics and control circuits as for regular T5, T8, T12 and Circline lamps
- For attracting flies and mosquitoes
- Photosensitisation and photochemical reactions

Code	Description	Nominal Lamp			Cap to Cap Lamp Length	Lamp Colour	Cap	Packing Qty
		Watt	Volt	Current				
T5 Blacklight 350								
9000007	F4WT5/BL350	4W	29V	0.170A	136mm	Blacklight	G5	50
0000017	F6WT5/BL350	6W	42V	0.160A	212mm	Blacklight	G5	25
0000023	F8WT5/BL350	8W	56V	0.145A	288mm	Blacklight	G5	25
0000384	F11WT5/BL350	11W	34V	0.350A	212mm	Blacklight	G5	25
0000045	F15WT5/BL350	15W	44V	0.310A	288mm	Blacklight	G5	200
T8 Blacklight 350								
0000076	F15WT8/BL350	15W	55V	0.310A	437mm	Blacklight	G13	25
T12 Blacklight 350								
0000359	F20WT12/BL350	20W	57V	0.370A	590mm	Blacklight	G13	25
0001635	F40WT12/2ft/BL350	40W	47V	0.880A	590mm	Blacklight	G13	25
0000185	F40WT12/BL350	40W	103V	0.430A	1199mm	Blacklight	G13	25
Circular Blacklight 350								
0000489	FC22W/BL350	22W	62V	0.400A	216mm Ø	Blacklight	G10q	12